

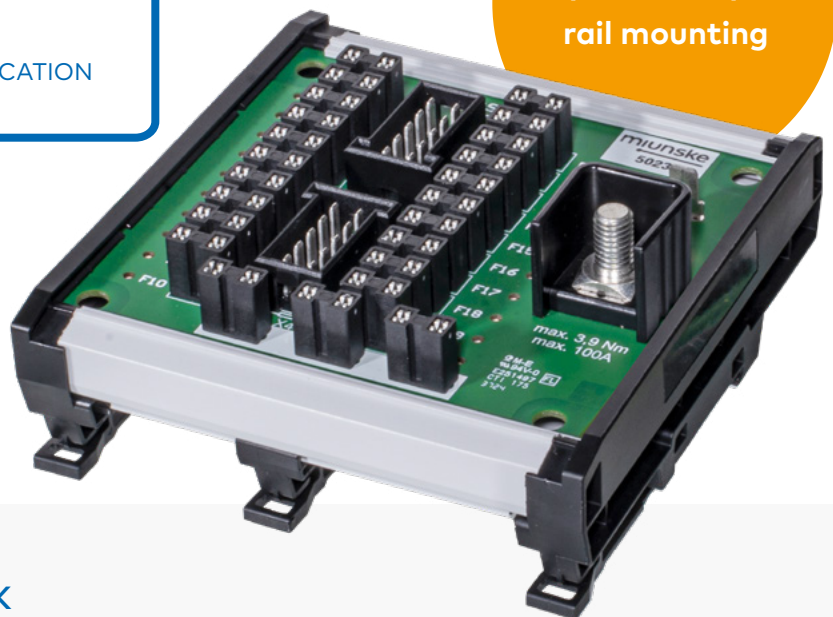
# STANDARD POWER DISTRIBUTION UNIT

m.PDU SF 20 in 4 standard variants

## WIDE VARIETY

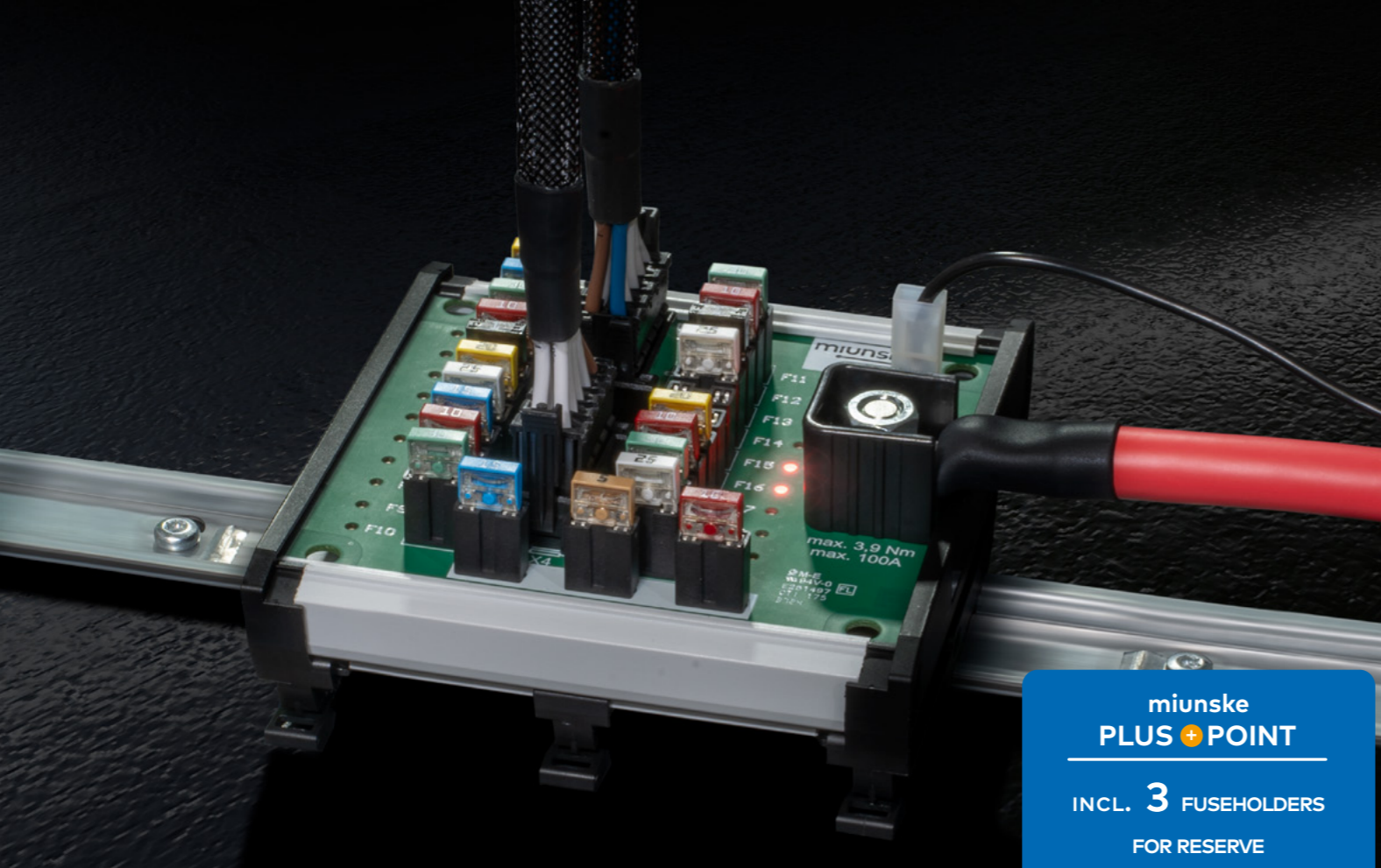
- 4 AVAILABLE STANDARD TYPES
- CONNECTOR FRONT OR REAR SIDE
- WITH OR WITHOUT FUSE FAILURE INDICATION

accessories:  
adapter for top-DIN  
rail mounting



- + FAST AVAILABILITY EX STOCK
- + SERVICE-FRIENDLY THANKS TO FUSE FAILURE INDICATION VIA LED  
AS WELL AS 3 FUSEHOLDERS FOR RESERVE
- + EASY MOUNTING, ALSO ADAPTABLE ON TOP-DIN RAILS





## M.PDU SF20 IN 4 STANDARD VARIANTS

Compact power distribution, with optional fuse failure indication for more convenience.

There is a noticeable trend towards decentralized energy distribution in large and complex commercial vehicles and mobile machinery. In addition to individually developed power distribution units there is a need for compact, quickly available solutions that protect local control circuits.

miunske® offers standard solutions for these requirements. The power distribution board m.PDU SF-20 is available in 4 different variants, with front or rear connectors and with or without fuse failure indication. This PDU can be mounted freely in the vehicle or in a standard housing. For mounting on top-hat rails, miunske offers a suitable adapter.

## PRODUCT ADVANTAGES

- + fast availability ex stock
- + cost efficient and user-friendly through demand-oriented combination of variants with and without fuse failure indication
- + easy top-DIN rail mounting via suitable adapter
- + individual adaptations possible within the scope of a project
- + service-friendly due to 3 additional reserve fuses
- + plug & play

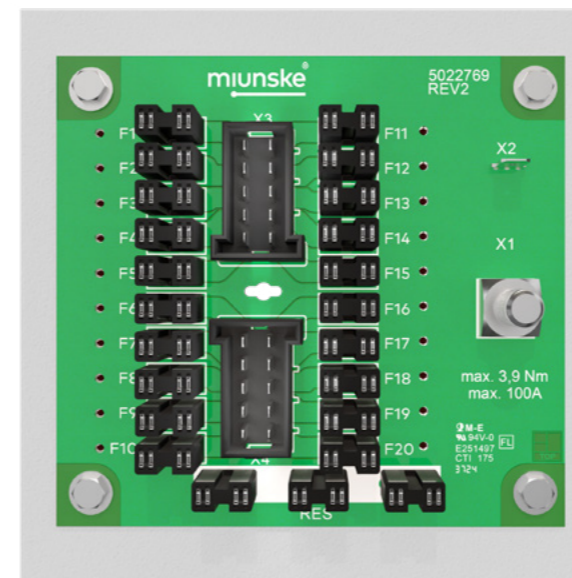
## VARIANTS

### 1 with front or rear connectors

Select the suitable PDU from the following variants depending on the functional requirements and installation situation:

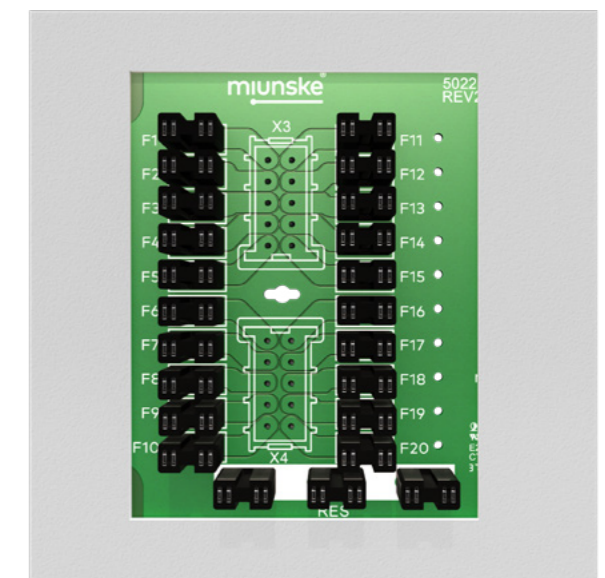
#### m.PDU SF20-F

m.PDU SF20-F equipped with 20 MiniVal-fuseholders and front connectors (item 5022768)

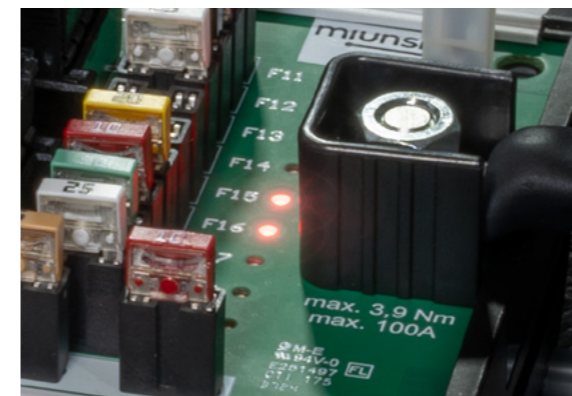


#### m.PDU SF20-B

m.PDU SF20-B equipped with 20 MiniVal-fuseholders and rear connectors (item 5024071)



### 2 with fuse failure indication



#### m.PDU SF20-FC

m.PDU SF20-FC equipped with 20 MiniVal-fuseholders and front connectors, with fuse failure indication (item 5023130)

#### m.PDU SF20-BC

m.PDU SF20-BC equipped with 20 MiniVal-fuseholders and rear connectors, with fuse failure indication (item 5024072)

## ACCESSORY TOP DIN RAIL ADAPTER

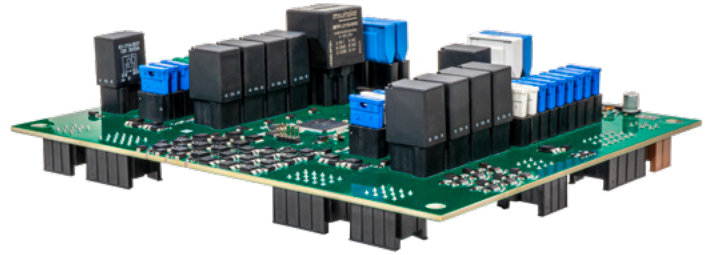
We offer you the right top-hat rail adapter for mounting one or more power distribution boards. This simplifies the implementation of extensions in the energy distribution system.



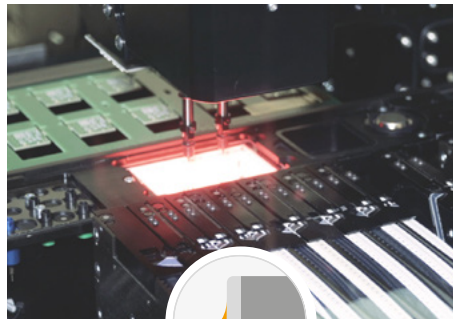
# CUSTOMIZED CENTRAL ELECTRICAL SYSTEMS

developed and manufactured due to your needs

If your requirements go beyond standard variants, we will develop your individual central electrics exactly according to your requirements profile. Thanks to our development expertise and experience, from robust power distribution units to intelligent central electrical systems, we ensure optimum power distribution in your commercial/special-purpose vehicle or mobile working machinery.



Different assembly technologies for PCB production are already incorporated into the development process of the electronic component. We offer you the solution that fits your project perfectly.



## miunske® PLUS + POINTS

+  
FIXED  
CONTACT PERSON

+  
JUST IN TIME  
ENGINEERING

+  
IN-HOUSE  
DEVELOPMENT  
SERVICE

+  
STORAGE &  
ORDER PICKING

+  
DELIVERY RELIABILITY  
&  
FAST AVAILABILITY

+  
COMPREHENSIVE  
TECHNICAL  
SUPPORT

+  
TRAINING  
CENTER

**miunske GmbH**

+49 35938 9800-0 • [info@miunske.com](mailto:info@miunske.com)

Oberlausitzer Straße 28 • D-02692 Großpostwitz

[miunske.com](http://miunske.com)

Stand: 02/2025

**miunske®**